

Farm to Table

Download

| Print

| Color

| Share

P. LAGOMARCINO
 A lone banana first he bought
 And then he had a bunch:
 He saved his nickles and his dimes
 And bought the biggest bunch!
 Then next he ordered by the car
 And worked with might and main,
 Till now he's our Banana King
 And buys 'em by the train!



Irving C. Norwood, A Portfolio of Cartoons as Published by the Davenport Times 1912-13 (Davenport, IA : Davenport Times, 1913)



Field Day!

Color key:

- 1 — Red
- 2 — Light blue
- 3 — Yellow
- 4 — Light brown
- 5 — Flesh tones

- 6 — Light green
- 7 — Dark purple
- 8 — Dark green
- 9 — Orange
- 10 — Maroon
- 11 — Light purple

Bawden, Sarah, ed. "Kid Stuff." *Quad-City Times*. August 20, 1977.

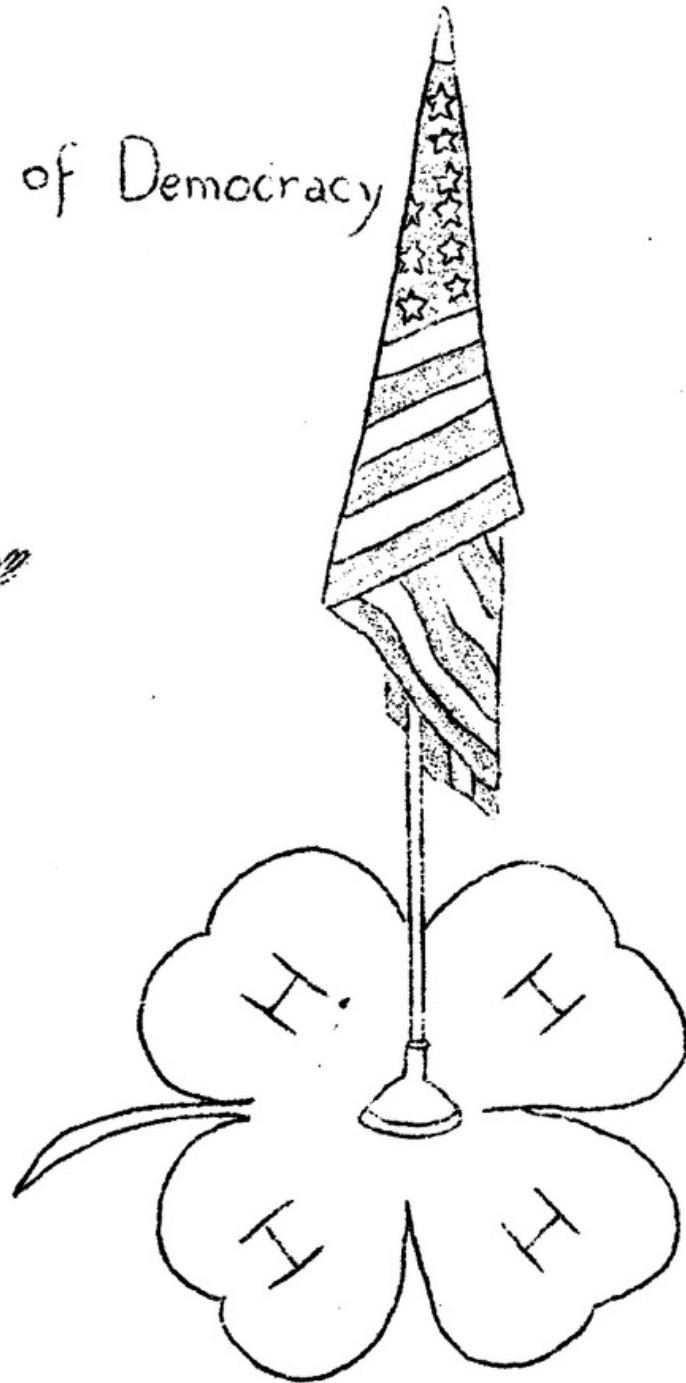
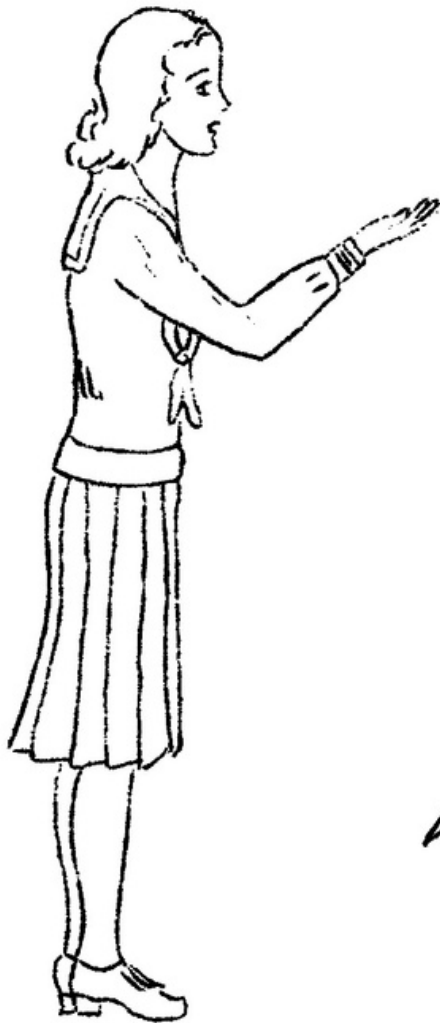
For more coloring pages, visit ColorOurCollections.org

CHARLES S. HUBER
If the land he sell to the amateur
Is as fertile as his mind,
The man who buys a farm from him
Most certainly has a find.
" Jack's beanstalk grew so fast," says he,
" That it almost touched the sky,
But it didn't bear so well as mine,
And wasn't one half so high."



Irving C. Norwood, A Portfolio of Cartoons as Published by the Davenport Times 1912-13 (Davenport, IA : Davenport Times, 1913)

"Old Glory,"
The Symbol of Democracy



18th Annual Rally Day
June 10, 1939
Roehl's Hall - Maysville





OTTO HILL

He doesn't like the winter time
For nothing grows at all;
He'd rather live those sunny months
Between the spring and fall.
For then upon his Main street farm
He hoes and rakes his fill—
"I'd rather raise a radish than
A loan," says Otto Hill.





G. WATSON FRENCH

There isn't a pig on all his place
 Whose blood isn't perfectly blue;
 They're worth a lot more on the hoof
 Than I—and probably you.
 They're cultured, too, those perfect pigs,
 For they never, never root,
 And when one gets warm, he just turns on
 A shower bath with his snout!

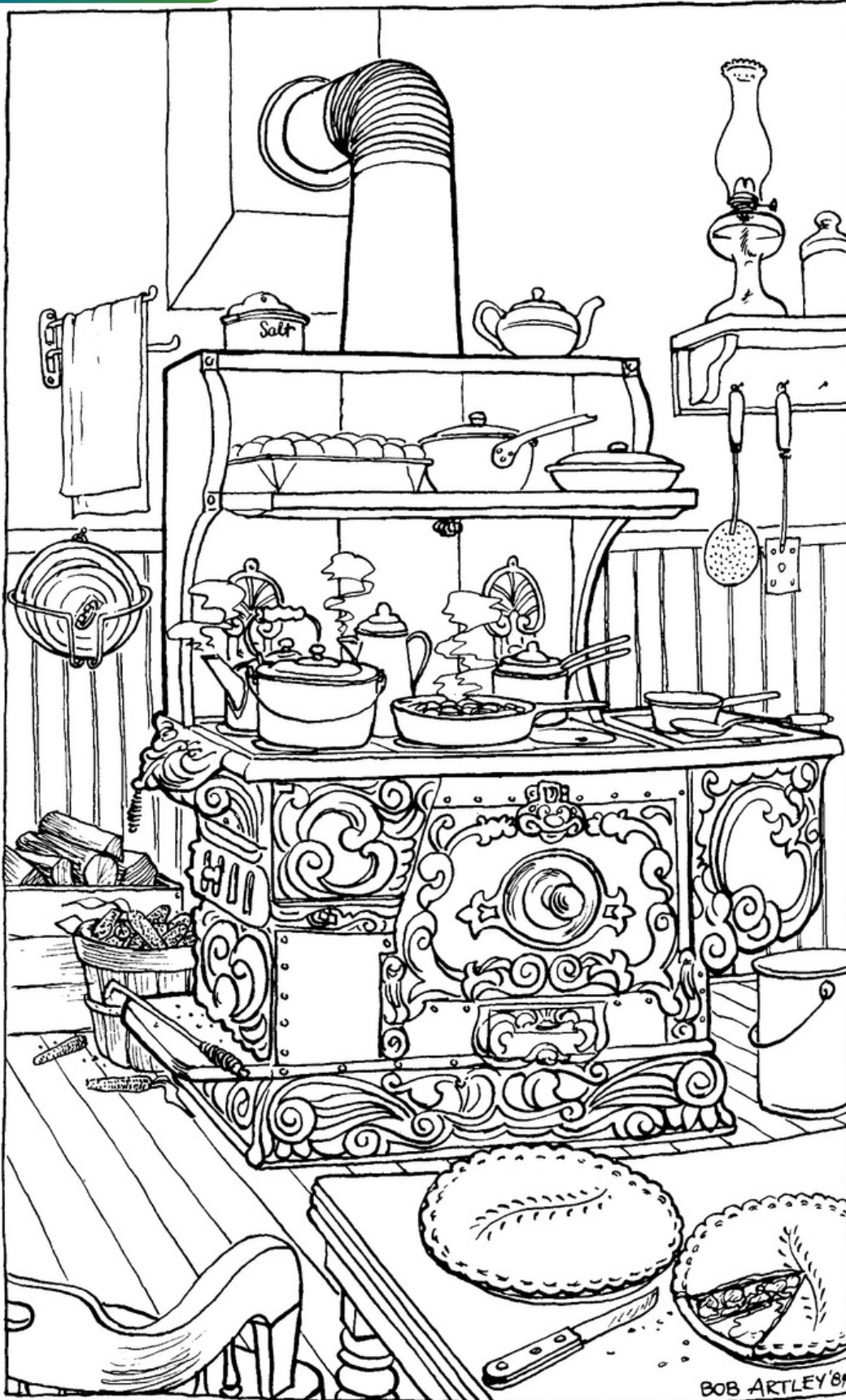


Illustration by Bob Artley for *We Belong to the Land* by Beulah Meier Pelton (Ames, IA : Iowa State University Press, 1984), 44.



JOHN F. DOW

A banker and a farmer both
Is portly John F. Dow;
In raising cash and produce both
He shows his neighbors how.
His back yard patch is wonderful,
No theft his pride can chafe,
He leaves his money lying 'round
But the spuds go in the safe.

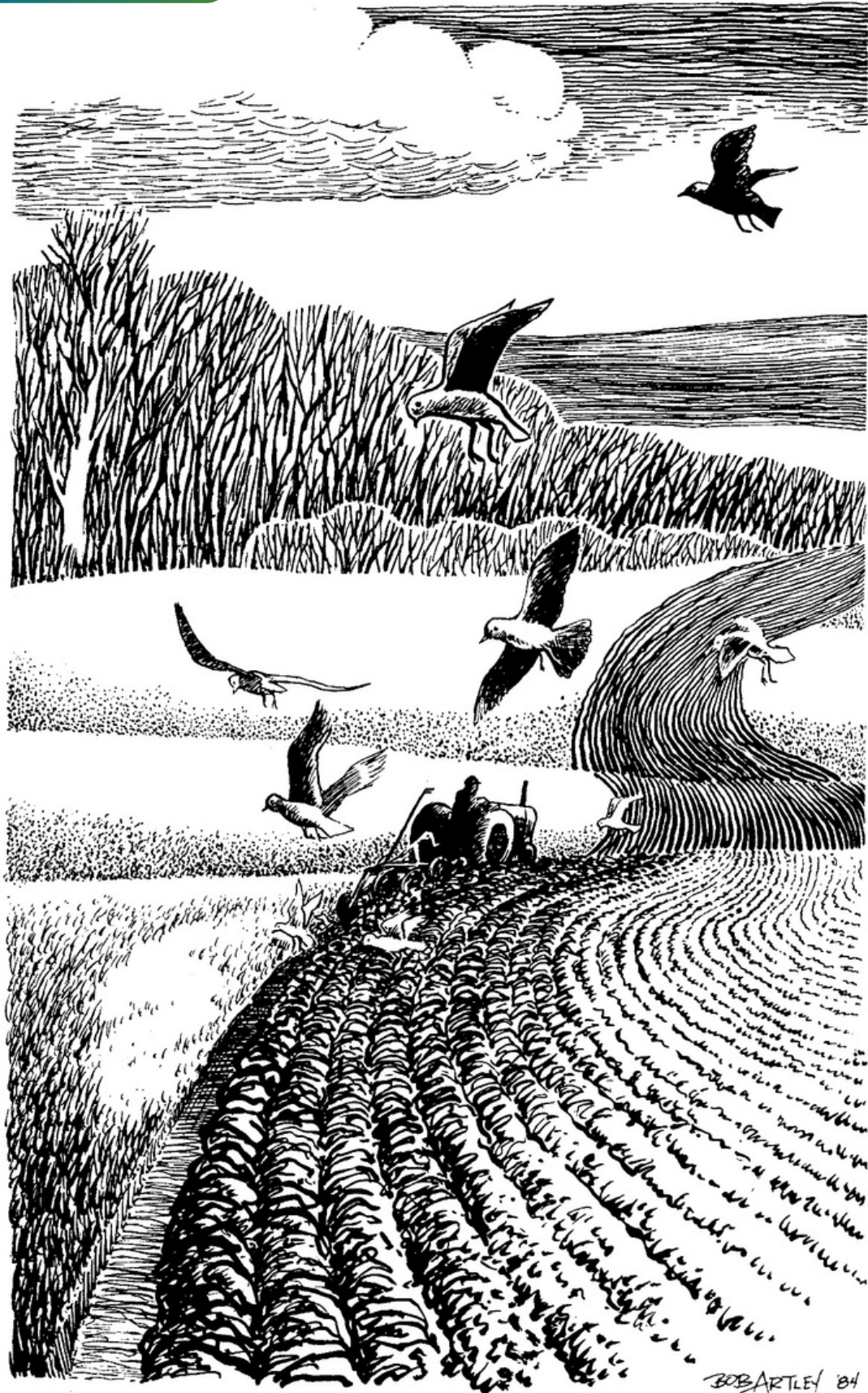


Illustration by Bob Artley for *We Belong to the Land* by Beulah Meier Pelton (Ames, IA : Iowa State University Press, 1984), cover.



ROBT. T. ARMIL,

He loves to labor on the farm
It leaves him "in" not "out."
He'd even drive, if need arose,
His very longest route.
His every cow is pedigreed,
He feeds 'em fine as silk,
And never will you find a drop
Of water in the milk.

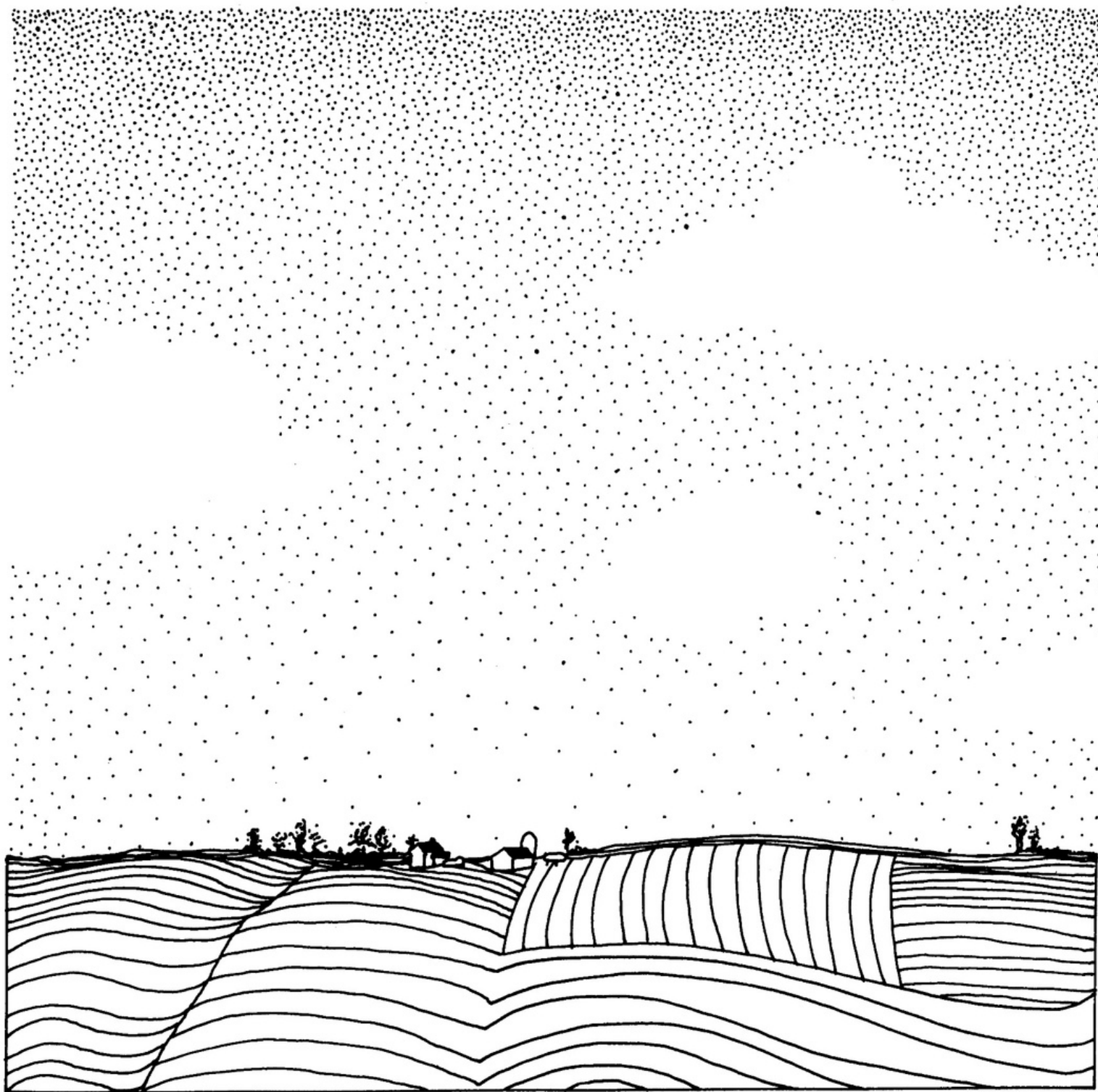


Illustration by Sue Maher for *The Search for Iowa* by Dan Hunter (Des Moines, IA : Radio Ranch Press, 1984), 7.

Download



Print



Color



Share

blogs.davenportlibrary.com/sc/



[@davenportlibrarysc](https://www.facebook.com/davenportlibrarysc)

davenportlib/dpl-special-collections/



[@davenportspecialcollections](https://www.instagram.com/davenportspecialcollections)

archives.davenportlibrary.com/

